

MAT in Jails and Drug Courts Learning Collaborative Informational Webinar



Bren Manaugh, LCSW-S
Project Director
December 2022



MAT in Jails and Drug Courts is funded by DHCS through CA FY 2022/23 budget, which included an allocation of State General Funds for the ongoing support to the Medication Assisted Treatment (MAT) Expansion Project

INTRODUCTION AND PAST EFFORTS

HEALTH MANAGEMENT ASSOCIATES

I INTRODUCTION – HEALTH MANAGEMENT ASSOCIATES (HMA)

- HMA specializes in publicly funded health care and the partners and populations that rely on it
- National with nearly 600 consulting colleagues and growing
- Four offices in California

OUR COLLEAGUES ARE FORMER:

- » Healthcare leaders and practitioners at county and jail agencies
- » Hospital, health system and state-based leaders
- » Physicians and other clinicians who have run health centers and integrated systems of care—many still practice medicine
- » Policy advisors to governors and other elected officials
- » State Medicaid directors, mental health commissioners and budget officers
- » Senior officials from the Centers for Medicare & Medicaid Services (CMS) and the Office of Management & Budget (OMB)

<https://www.healthmanagement.com/>
<https://hmaioa.com/>



HMA California Offices in:

- Costa Mesa
- Los Angeles
- San Francisco
- Sacramento

I INTRODUCTION – HMA CORE TEAM

Project Leadership



Bren Manaugh, LCSW-S
Project Director

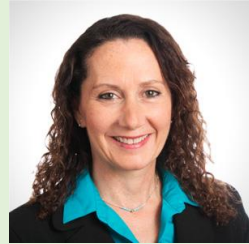


Amanda Ternan, PMP
Project Manager



Kelly Wright, MA
Project Manager

HMA Coaches and Subject Matter Experts (SME)



Carol Clancy, PsyD
Jail MAT & Juvenile Justice Coach



Margaret Kirkegaard, MD, MPH
Jail MAT Coach



Marc Richman, PhD
Jail MAT Coach



Charles Robbins, MBA
Child Welfare Coach



Shannon Robinson, MD
Addiction and Prescriber SME



Rich VandenHeuvel, MSW
Jail MAT Coach



Keegan Warren-Clem, JD
Legal SME



Julie White, MSW
Jail MAT Coach



Judge Leonard Edwards (Ret.)
Judicial and Child Welfare SME

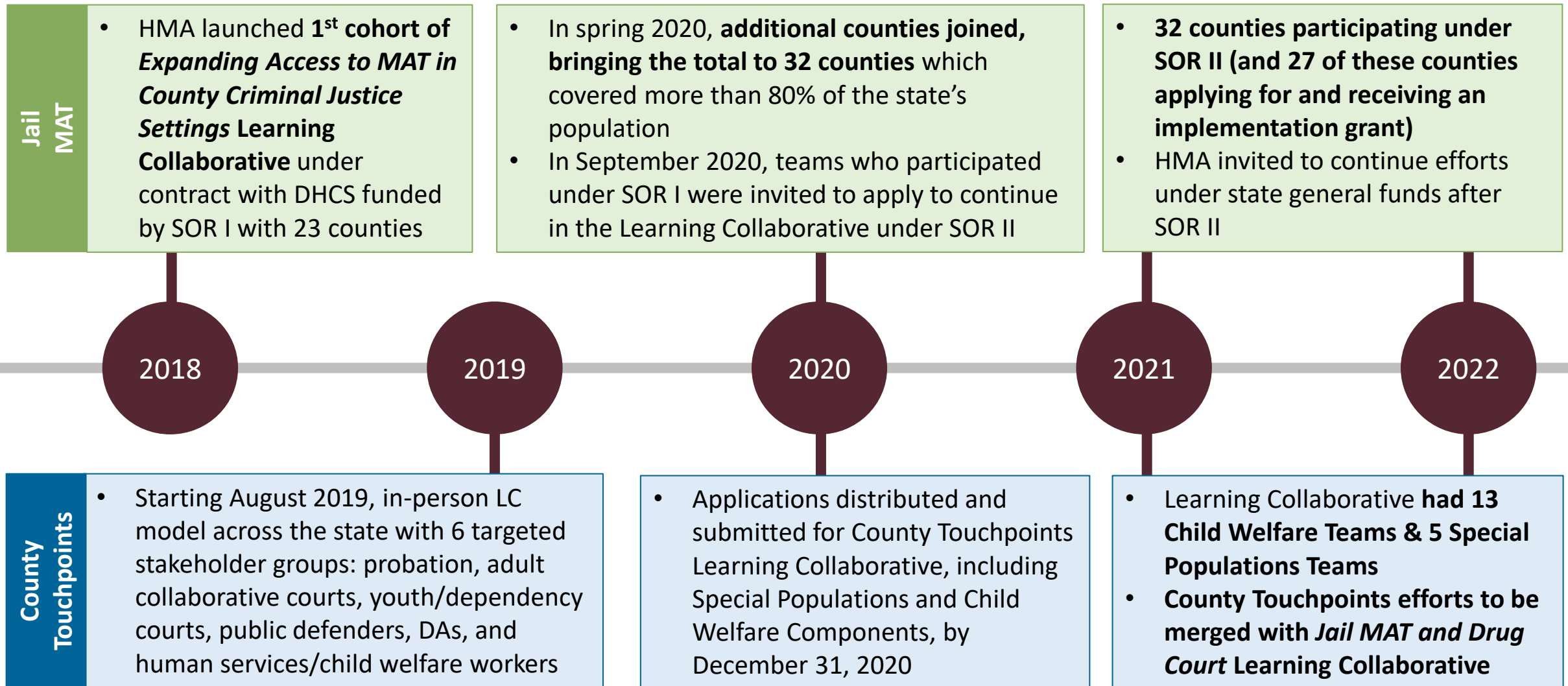


Howard Himes
Child Welfare Coach



Liz Stanley-Salazar
Child Welfare & Juvenile Justice Coach

HMA'S STATE OPIOID RESPONSE (SOR) BACKGROUND



HMA MODEL FOR IMPLEMENTATION OF MAT IN JAILS AND COUNTY JUSTICE SYSTEM



IMPLEMENTATION OF MAT IN JAILS, PRISONS AND JUSTICE ECOSYSTEMS

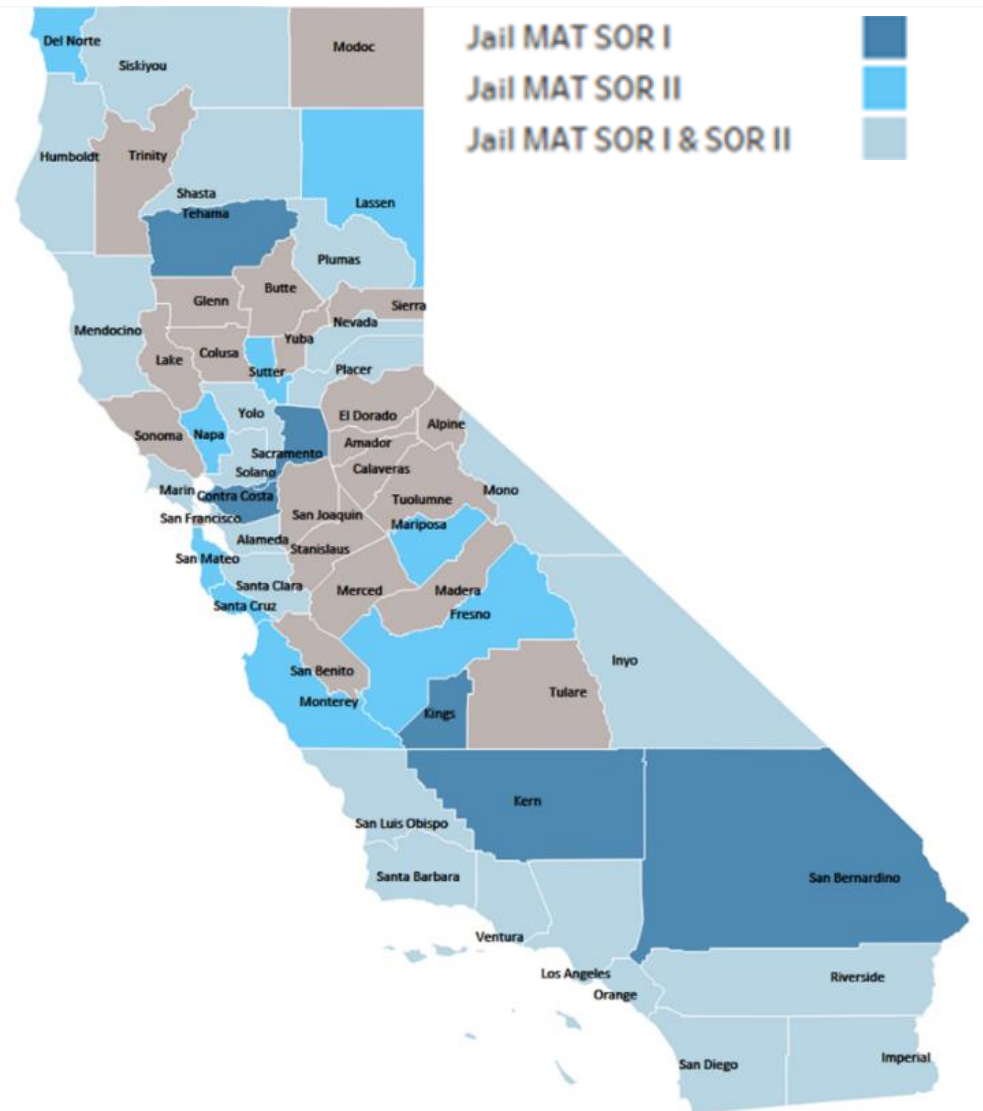
In our model MAT is defined as

- Implementation of **at least two forms of the FDA-approved medications:**
naltrexone; buprenorphine; methadone ---
continuation and/or initiation
- + other evidence-based interventions for Opioid Use Disorder and Stimulant Use Disorders
- Access to naloxone for overdose prevention

Alignment with community standards of care

Access to behavioral health and other services;
re-entry planning

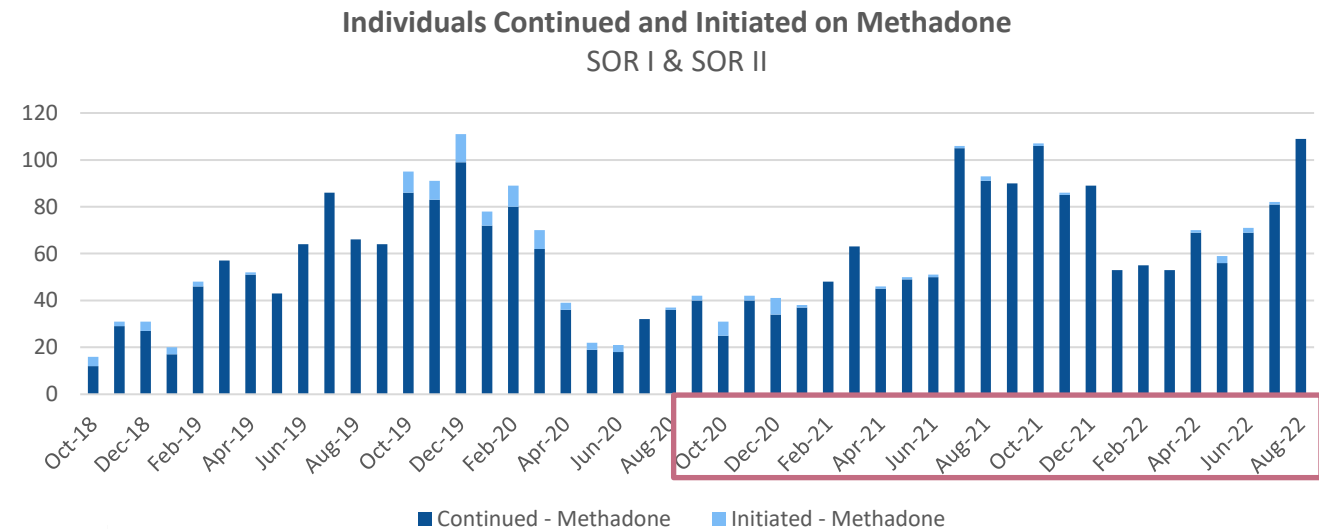
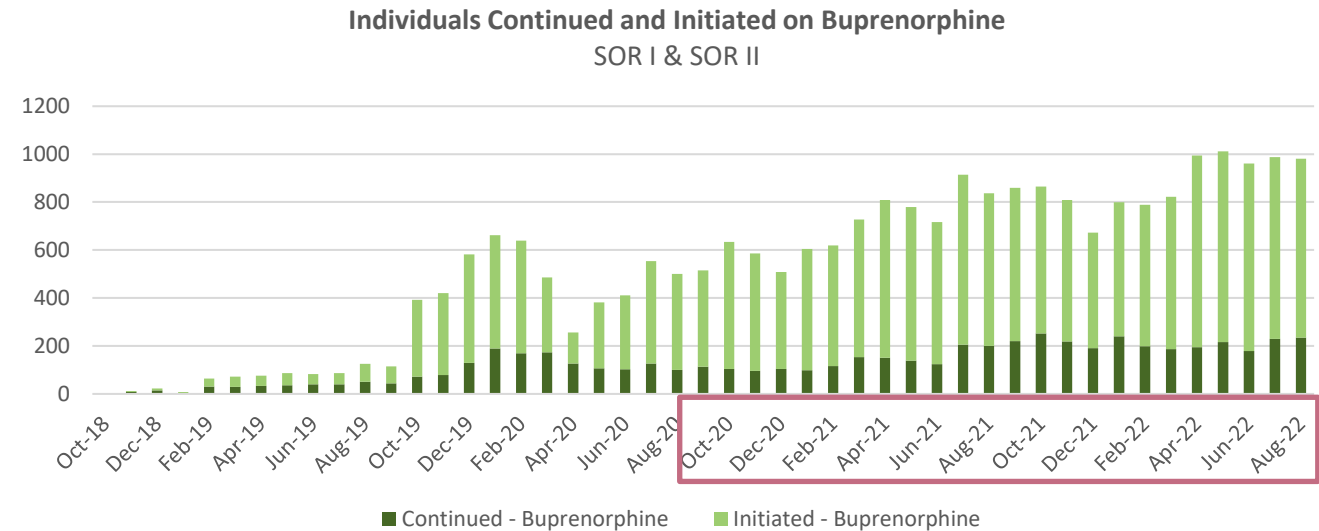
PREVIOUS LEARNING COLLABORATIVE: JAIL MAT (1 OF 2)



- Throughout the SOR I and SOR II funding and contracting periods, **37 different California counties** have been in the Learning Collaborative
- Technical assistance included individualized monthly coaching, topic-specific webinars, quarterly learning collaboratives, office hours, and ad hoc training as requested
- Implementation grants used to:
 - Supplement staffing costs
 - Purchase medications
 - Increase behavioral health services
 - Provide harm reduction
 - Reentry resources and support *and more*

PREVIOUS LEARNING COLLABORATIVE: JAIL MAT (2 OF 2)

- Teams demonstrated significant progress in increasing access to MAT during incarceration
- 31,702** individuals have received MAT while incarcerated in county jails participating in this Learning Collaborative across the 36 counties who have submitted data during SOR I and SOR II, including **19,000** initiated onto buprenorphine in the jail
- The percentage of individuals withdrawn from MAT continued to decrease across the project



PREVIOUS LEARNING COLLABORATIVE: COUNTY TOUCHPOINTS (1 OF 2)

Outgrowth of Jail MAT LC:

Recognized need to educate and engage other justice/system stakeholders to support jail MAT implementation

Addressed MAT = “not clean”

Probation,
Courts/Judges,
District Attorneys,
Public Defenders,
Child Welfare

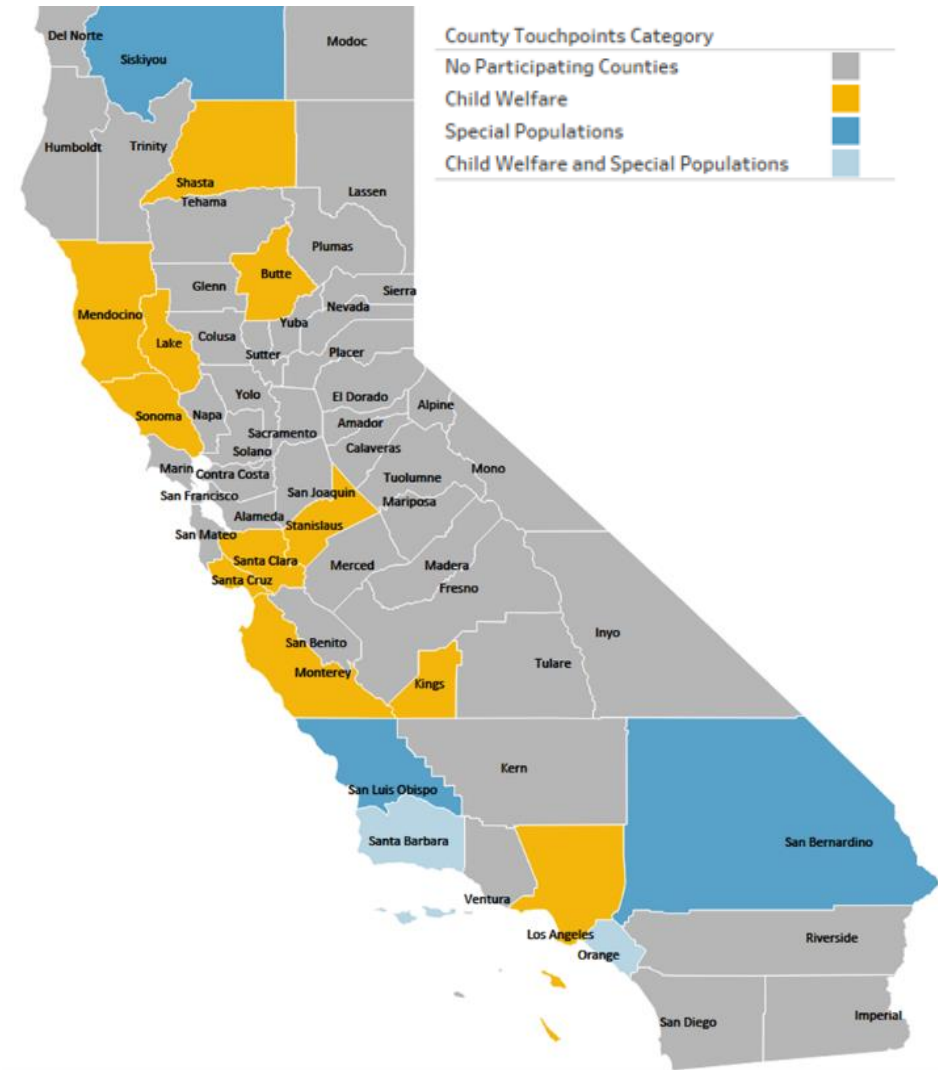
More than 1,500
trained under
SOR I

Under SOR II: Learning Collaborative

14 county teams participated in Learning Collaborative at intersection of SUD, justice, and child welfare systems

County collaborations, resource alignment, system mapping and gap analysis, individualized county coaching and goal setting

PREVIOUS LEARNING COLLABORATIVE: COUNTY TOUCHPOINTS (2 OF 2)



- County teams could join under Child Welfare or Special Populations
- Education and training about opioid addiction and treatment in county criminal justice and child welfare systems developed for stakeholders in **probation, adult collaborative courts, public defenders, district attorneys, child welfare, and youth and dependency courts**
- Workgroups aimed at enhancing processes, sharing best practices, and leveraging multi-county input to inform state and county decisions
 - **Plans of Safe Care (POSC):** 5 counties completed their POSC; 2 completed their POSC and are pending policy implementation; and 4 counties have POSC in process
 - **Data Workgroup:** participated in the CDSS Change Request 8643 and will have successfully created a new CWS/CMS substance use mandatory field to be added in February 2023

**NEW LEARNING
COLLABORATIVE:
*MAT IN JAILS
AND DRUG COURTS***

HEALTH MANAGEMENT ASSOCIATES

I OVERVIEW

The project *MAT in Jails and Drug Courts* is funded by DHCS through CA FY 2022/23 budget, which included an allocation of State General Funds for the ongoing support to the Medication Assisted Treatment (MAT) Expansion Project

The goal of the project is to increase access to MAT in county jails, drug courts, and the child welfare/juvenile justice systems

MAT In Jails and Drug Courts includes grant funds and participation stipends to be distributed to participating county teams who will also receive technical assistance (TA) and coaching

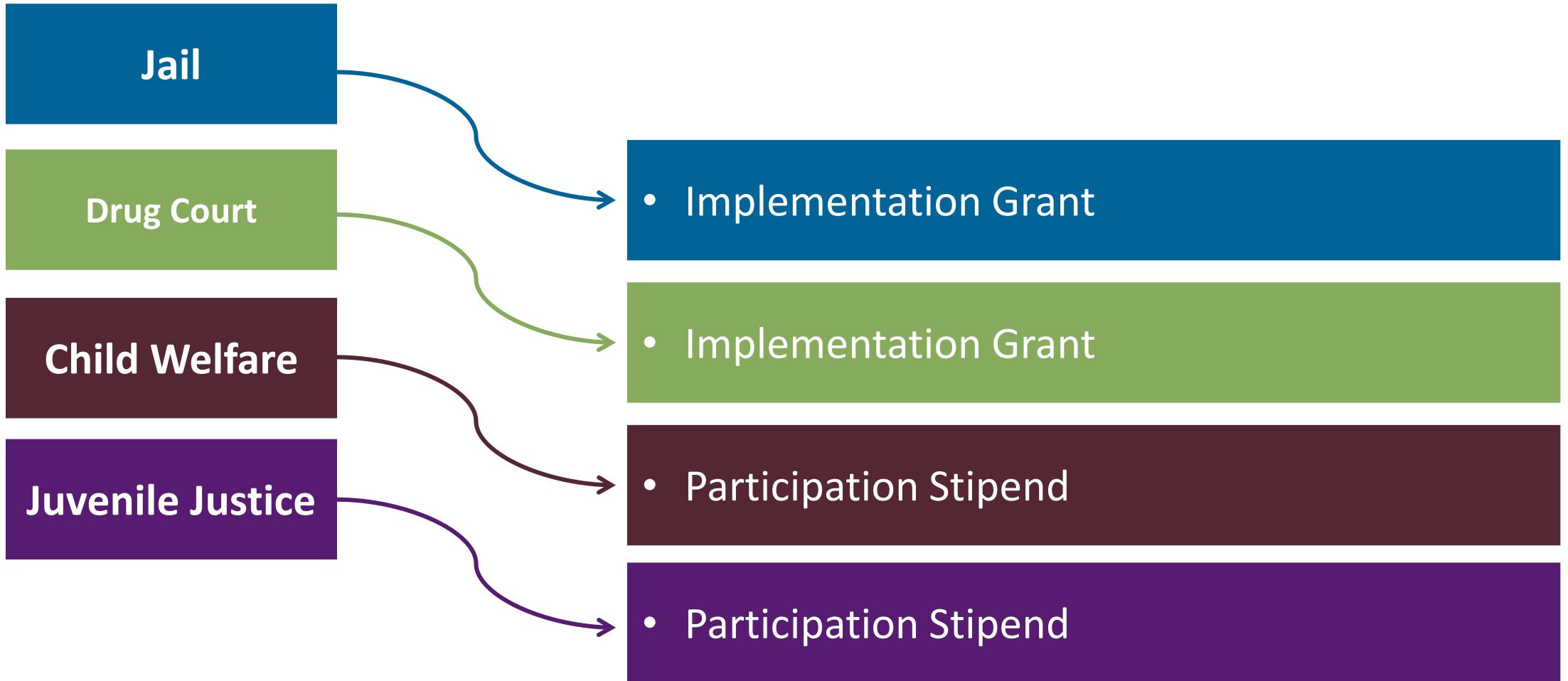
The project term is **10/1/2022 through 9/30/2024** with the possibility of extending TA and coaching through **6/30/2025**

OBJECTIVES AND COMPONENTS OF LEARNING COLLABORATIVE

The objective of the Learning Collaborative is to improve coordination among all county agencies and providers who serve justice-involved county residents and to develop bridges to further build system capacity to ensure access to effective treatment and recovery supports.

- Learning Collaborative Counties receive:
 - Individualized coaching with HMA coach, with additional SMEs brought in as needed
 - Access to webinars, quarterly learning collaboratives, and trainings based on needs of counties
 - Optional participation in *ad hoc* workgroups and discussion groups with peers throughout the state to tackle systemwide issues
 - Grants and stipends to enhance county efforts and pilot innovative solutions that demonstrate outcomes to lead to sustainable funding

■ PARTICIPATION OPTIONS



Teams can opt to apply for technical assistance only (without implementation grant or participation stipend) for any of the options above

- Multidisciplinary team to support implementation of MAT in county jails with designated Jail MAT team lead(s); assigned 1 county team Jail MAT lead coach
- Encourage inclusion of drug court representative(s) where not already integrated
- Engage child welfare, probation and other key agencies and partners in the county to drive progress toward a coordinated county plan for county residents with Opioid Use Disorder (OUD) and justice system involvement.
- These activities may be supplemented by a second HMA subject matter expert and coach who will work in coordination with the Jail MAT lead coach.

Please note: county eligible for jail **OR** drug court implementation grant

- Multidisciplinary team to support implementation of and access to MAT in county drug courts with designated drug court team lead(s); assigned 1 county team lead coach
- Support access to MAT for drug court participants through drug court or contracted staff, as applicable, where clinically indicated
- Encourage inclusion of Jail MAT representative(s) where not already integrated
- Engage child welfare, probation and other key agencies and partners in the county, to drive progress toward a coordinated county plan for county residents with OUD and justice system involvement. These activities may be supplemented by a second HMA subject matter expert and coach who will work in coordination with the Jail MAT lead coach

Please note: county eligible for jail **OR** drug court implementation grant

- Multidisciplinary team to support access to MAT for those with involvement in the county Child Welfare/Juvenile Justice systems with designated team lead(s); assigned 1 Child Welfare lead team coach
- If the county does not have a participating Jail MAT or drug court team, requires a letter of support from Sheriff representing the Jail and/or an appropriate drug court representative with the application

I TIMELINE

December/
January 2022

- Informational webinars: December 7, December 13, December 14, and January 9th
- **Applications due January 15, 2023 (extended from original date of December 31, 2022)**

January 2023
and Beyond

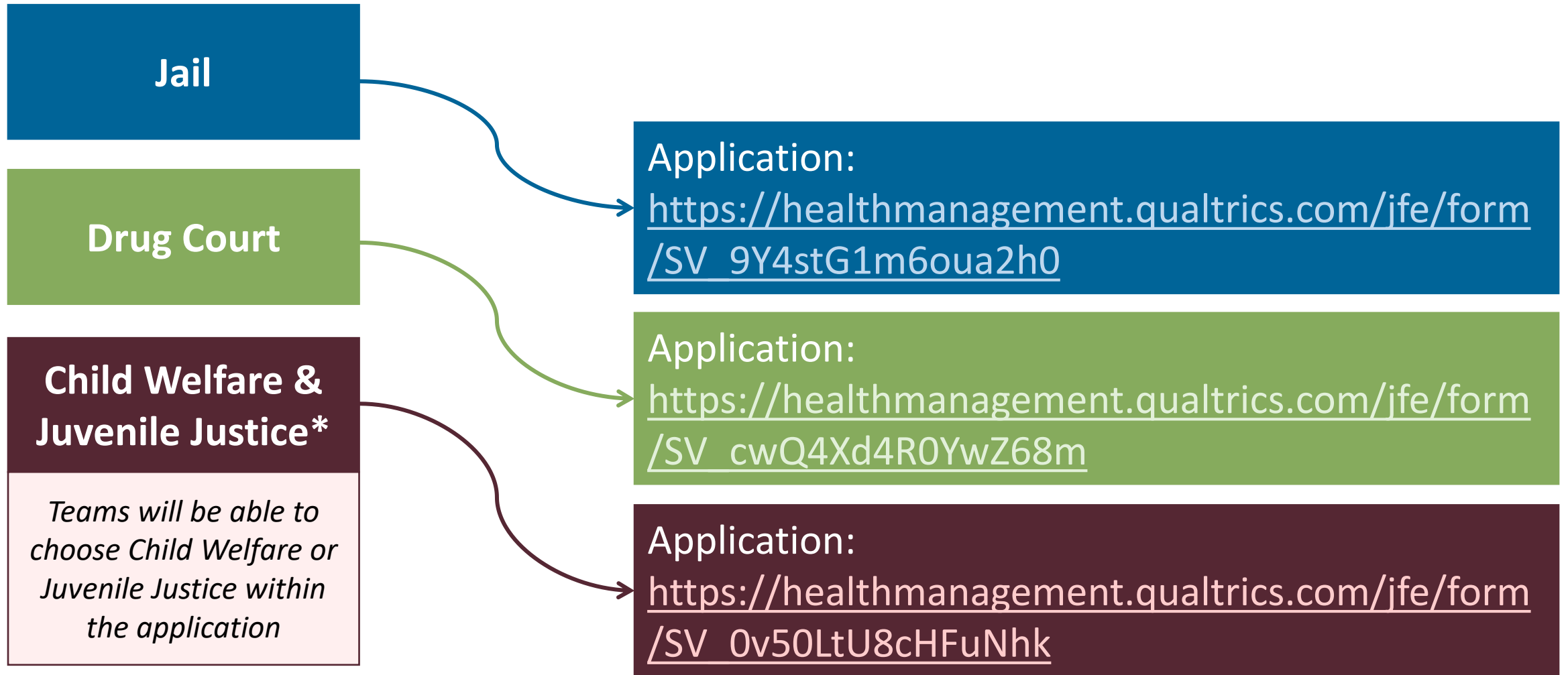
- Grant and stipend decisions to be made and teams notified by January 23, 2023
- A Memorandum of Understanding (MOU) will be issued between HMA and the grantee within 14 days of grant approval, including additional guidance on allowable/unallowable expenses
- 50% of the Jail MAT/Drug Court Implementation Grant award will be paid upon receipt of a fully executed MOU (second half of payment will be paid in October 2023 upon receipt of required data). Child Welfare/Juvenile Justice Participation Stipends will be paid in full upon receipt of executed MOU

APPLICATION COMPONENTS

	Jail	Drug Court	Child Welfare	Juvenile Justice
Online Application	✓	✓	✓	✓
Letters of Support	✓* <i>*Not required from continuing counties</i>	✓	✓* <i>*Not required from continuing counties</i>	✓
Budget Template and Attestation (to be due in January upon acceptance/ grant amount determination)	✓	✓	X	X
Signed MOU in order to receive funds	✓	✓	✓	✓

Lessons Learned from Previous Learning Collaboratives: Board of Supervisors may need to approve MOUs; please plan ahead and provide advance notice to prevent delays in receiving funding

APPLICATION LINKS



Questions



CONTACT US

FOR ANY QUESTIONS OR COMMENTS
MATinCountyCJ@healthmanagement.com

HMA can meet individually with your county to discuss these opportunities – we are happy to help! Please send all requests to the email address above.

Continuing counties can also reach out to your current team coach.
